

Film IJ8624

3M™ Scotchcal™ Graphic Film for Textured Surfaces IJ8624 and 3M™ Scotchcal™ Luster Overlaminate 8524

Uses

- Unique products and tools used for solvent inkjet printed graphics applied to textured surfaces

Key Features

- Excellent adhesion to moderately textured surfaces when using the 3M patent pending installation procedure
- Specialized tools and proven techniques for efficient and effective application
- Film is removable with heat
- Gray adhesive on film IJ8624 will hide almost any wall color

- Cast film IJ8624 for conformability and optimal print quality
- Highly conformable and dimensionally stable overlaminate; ideal for textured surfaces

Benefits

- Reliable adhesion turns indoor and outdoor textured surfaces into prime real estate
- Ability to create photographic quality images in any size, shape or design
- Fast, clean and generally more cost effective compared to painted graphics

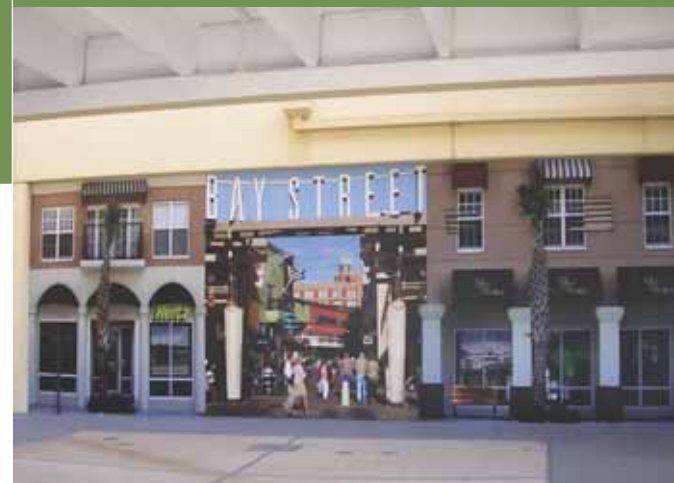
WARRANTY and LIMITATIONS. The following is made in lieu of all other express or implied warranties, including any implied warranty of merchantability or fitness for a particular purpose: all 3M products are warranted to be free of defects in materials and manufacture at the time of shipment and to meet the specifications stated in Product Bulletin IJ8624. For additional tools information see the Product and Instruction Bulletin TSA & CMP Tools. Also visit Commercial Graphics Warranty Brochure, which gives the terms, additional limitations of the warranty, if any, and limitations of liability. 3M and Scotchcal are trademarks of 3M Company.

3M Commercial Graphics
3M Center, Bldg. 220-12E-04
St. Paul, MN 55144 USA
General & Technical Information:
1-800-328-3908

3M Canada
Box 5757
London, Ontario
Canada N6A 4T1
1-800-265-1840
Fax 519-452-6245

3M México S.A. de C.V.
Av. Santa Fe No. 55
Col. Santa Fe, Del. Alvaro
Obregón
Mexico D.F. 01210
5255-5270-0400
Fax 5255-5270-2277

3M Puerto Rico, Inc.
Puerto Rico Industrial Park
PO Box 100
Carolina, PR 00986-0100
787-620-3000
Fax 787-750-3035



A Lexus car dealership used 3M™ Scotchcal™ Graphic Film for Textured Surfaces IJ8624 and 3M™ Scotchcal™ Luster Overlaminate 8524 to create a San Francisco façade to enhance the environment. The entire storefront is a textured surface graphic!



3M™ Two-Handled Textured
Surface Applicator TSA-4

3M™ Textured Surface
Applicator TSA-2 for
grout lines

Stay Informed

www.3Mgraphics.com



Release D. March 2012
Please recycle. Printed in USA.
© 3M 2012, All rights reserved
75-5100-2494-8

3M